

Profile and services



Logistech is a supply chain consulting company that specialises in computer modelling and the analysis of supply chain economics. Services include: deciding on the numbers and locations of production and distribution facilities; determining how and where products should be sourced, manufactured and stored; establishing vehicle fleet requirements and transport mode and method.



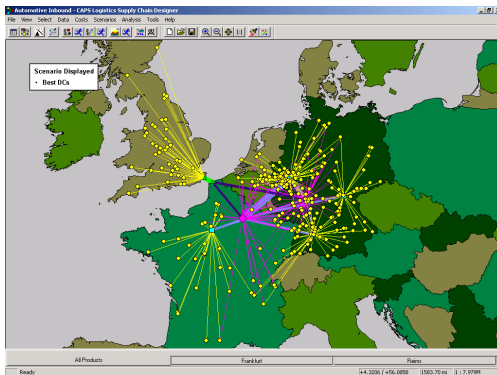
We have made a major investment in world leading software. We use the Network Design tool from Infor for modelling complex supply chains. Sophisticated cost models mean that multi-modal, multi-country supply chains can be modelled with the minimum of compromise. For example, transport cost models can reflect whether flows are balanced and site costs can incorporate step changes according to throughput.

We use the Paragon routing and scheduling system for fleet sizing studies. We have been using Paragon for over 15 years and have modelled a wide variety of transport operations across the world. Paragon schedules can be used to generate cost tables for Network Designer, and Paragon can be used to produce vehicle resources from its results.



Although we use leading edge technology on projects, this is always applied in a pragmatic manner, and in a way that seeks to simplify and inform rather than complicate and confuse.

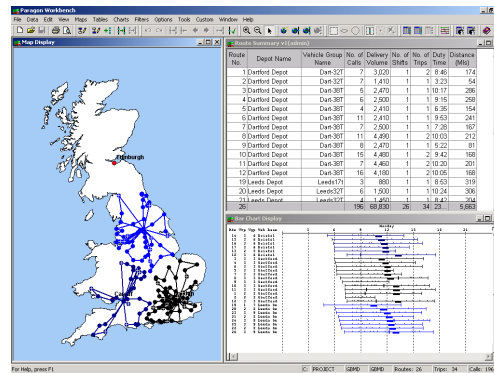
Logistics network optimisation



We have been using the Network Designer (formerly known as CAPS) since 1997 and are the leading users in Europe. It can be used to model multi-tier networks, including production facilities and international duties and drawbacks. It contains a scenario manager and the CPLEX solver, which produces the optimum solution. Modelling can be carried out by product, with the resulting flows displayed graphically for ease of understanding. Network Designer is an extremely powerful modelling tool, and we are experienced in presenting costs and constraints to the system in way that reflects the real world.

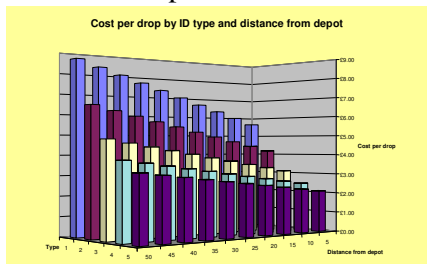
Fleet sizing studies

Paragon can be used to model many different types of vehicle operations and establish the number and types of vehicles that are required. We acquired a Paragon licence when we were established in 1991 and are skilled in using it to its full capability. It can be used to review the vehicle fleet in an operation and to test different service levels or new operating methods, such as double shifting.



Delivery cost modelling

We have developed a delivery cost apportionment model for customer profitability studies and to produce cost tables for use in the Network Designer. The model takes key statistics from Paragon, such as customer locations, drop sizes, stem and inter-drop speeds and distances. It then produces the cost of each delivery, which provides the basis for the profitability study or cost table. There are dangers with using apportioned costs, so we stress the need to test any decision with Paragon prior to implementation.



Project Process

When a client has a need for a project, we visit them to understand their objectives and requirements. We then give them a proposal, outlining our approach, the timescale and project costs, so that they can decide whether to go ahead. Projects can vary in length, but are typically 10 to 20 man days. It is possible to commission smaller scale projects where we use the same tools and techniques, but apply them in a simplified manner.

Clients

We work with a wide variety of clients. We have worked with many logistics companies, including Kuehne + Nagel and Keystone Distribution. Manufacturers we have worked with include Arla Foods, Europe's largest dairy company, modelling dairy location and supply to their retail customers. We have carried out Paragon modelling with AAH, the pharmaceutical wholesaler, producing new schedules for their twice-daily deliveries to chemists, hospitals and surgeries. We also work with other consulting companies, providing them with a supply chain modelling capability.

For further details contact Phil Gibbs of Logistech on 01327 811641 or at phil.gibbs@logistech.co.uk

**Logistech, The Stone Barn, Pury Hill Business Park, Alderton Road, Towcester, NN12 7LS
Telephone: 01327 811641 Fax: 01327 811854
www.logistech.co.uk**