

## Profile and services



Logistech is a supply chain consulting company that specialises in computer modelling and the analysis of supply chain economics. Services include: deciding on the numbers and locations of production and distribution facilities; determining how and where products should be sourced, manufactured and stored; establishing vehicle fleet requirements and transport mode and method.



We have made a major investment in world leading software. We use Supply Chain Guru™ for modelling complex networks. Sophisticated cost models mean that multimodal, multi-country supply chains can be modelled with the minimum of compromise. Supply Chain Guru™ allows you to design the optimum supply chain, make decisions on distribution and production facilities, optimise inventories and simulate performance.

We use the Paragon routing and scheduling system for fleet sizing studies. We have been using Paragon for over 15 years and have modelled a wide variety of transport operations across the world. Paragon schedules can be used to generate cost tables for Supply Chain Guru™, and Paragon can be used to produce vehicle resources from its results.

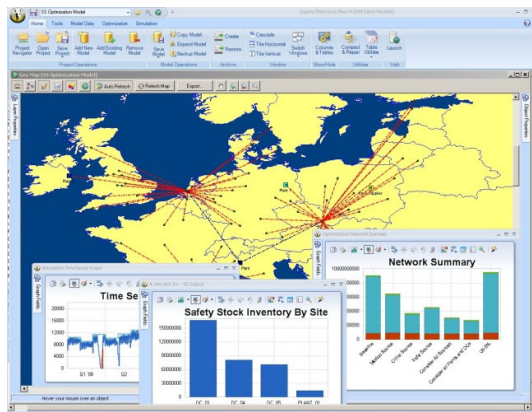


Although we use leading edge technology on projects, this is always applied in a pragmatic manner, and in a way that seeks to simplify and inform rather than complicate and confuse.

### *Logistics network optimisation*

Supply Chain Guru™ is a multiple time period modelling tool that encompasses network design, inventory optimisation and simulation. It can help you make decisions regarding site selection and location for manufacturing and distribution

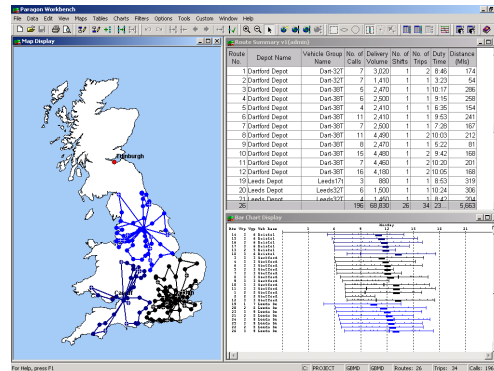
facilities, which suppliers to use, transport modes, inventory location and customer serving methods.



As well as providing detailed reports on sites, flows and costs, the powerful map-based graphics within Supply Chain Guru™ allow you to understand exactly what is happening within a logistics network. The flow of goods and the cost to serve customers can be displayed at product level.

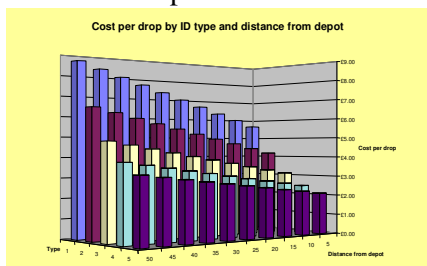
## Fleet sizing studies

Paragon can be used to model many different types of vehicle operations and establish the number and types of vehicles that are required. We acquired a Paragon licence when we were established in 1991 and are skilled in using it to its full capability. It can be used to review the vehicle fleet in an operation and to test different service levels or new operating methods, such as double shifting.



## Delivery cost modelling

We have developed a delivery cost apportionment model for customer profitability studies and to produce cost tables for use in network planning. The model takes key statistics from Paragon, such as customer locations, drop sizes, stem and inter-drop speeds and distances. It then produces the cost of each delivery, which provides the basis for the profitability study or cost table. There are dangers with using apportioned costs, so we stress the need to test any decision with Paragon prior to implementation.



## Project Process

When a client has a need for a project, we visit them to understand their objectives and requirements. We then give them a proposal, outlining our approach, the timescale and project costs, so that they can decide whether to go ahead. Projects can vary in length, but are typically 10 to 20 man days. It is possible to commission smaller scale projects where we use the same tools and techniques, but apply them in a simplified manner.

## Clients

We work with a wide variety of clients. We have worked with many logistics companies, including Kuehne + Nagel and Keystone Distribution. Manufacturers we have worked with include Arla Foods, Europe's largest dairy company, modelling dairy location and supply to their retail customers. We have carried out Paragon modelling with AAH, the pharmaceutical wholesaler, producing new schedules for their twice-daily deliveries to chemists, hospitals and surgeries. We also work with other consulting companies, providing them with a supply chain modelling capability.

For further details contact Phil Gibbs of Logistech on 01327 811641 or at [phil.gibbs@logistech.co.uk](mailto:phil.gibbs@logistech.co.uk)

Logistech, The Stone Barn, Pury Hill Business Park, Alderton Road, Towcester, NN12 7LS  
Telephone: 01327 811641 Fax: 01327 811854  
[www.logistech.co.uk](http://www.logistech.co.uk)